

INSTRUCTIONS FOR INSTALLING THE F/PORT CARD



SIENNA
IMAGING, INC.

6900 SOUTH PEORIA STREET
ENGLEWOOD, COLORADO 80112 USA
PHONE: 303.754.0200 FAX: 303.705.2270
WWW: <http://www.fotoprint.com>

ESDS DEVICE HANDLING

This unit contains devices subject to damage from electrostatic discharge (ESD). Handle electrostatic discharge sensitive (ESDS) devices in accordance with the following precautions and instructions. Refer to DOD-HDBK-263 and DOD-STD-1686 for additional ESD information.

1. ESDS components and circuit cards are shipped in special static dissipative shipping containers. Ensure that all required precautions are taken before opening the containers. Retain the containers for use when shipping ESD components. All static dissipative containers are identified with a warning label alerting the handler that the contents are ESD sensitive.
2. Because most circuit cards contain ESDS components, all circuit cards should be treated as being ESD sensitive. Individual components are not generally identified as being ESDS, except in packaging.
3. ESDS components should only be handled under the following conditions:
 - a. WHEN HANDLING ESDS ASSEMBLIES OR DEVICES, THE HANDLER MUST WEAR A STATIC CONTROL WRIST STRAP CONNECTED TO HIS OR HER SKIN.

The wrist strap must then be connected, through a 1 megohm resistor, to a static dissipative table top or to the equipment chassis ground. (NOTE: Most wrist straps have the 1 megohm resistor built in.) The static dissipative table top must be connected to ground through a 1 megohm resistor.
 - b. Handle ESDS components by the case or body whenever possible, and minimize touching of the leads.
 - c. Avoid the use of air blasts or aerosol sprays on ESDS circuit cards or components.
 - d. Pack and unpack ESDS components and devices only in static-free environments on a static dissipative table top. The handler must wear a wrist strap during packing or unpacking.
 - e. Keep all common plastics and clothing away from ESDS devices.
 - f. All soldering irons, test equipment, and equipment chassis must be grounded. Grounded power cords must be plugged in, even if the equipment is turned off.
 - g. Solder suckers must be of the anti static type.
 - h. Brushes must be of natural bristle.
4. Ensure that all ESDS devices are properly packaged in static dissipative coverings when in storage or transit.

Installing Your FarPoint Card with Windows 95

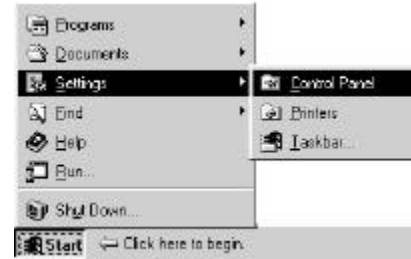
After unpacking your FarPoint Card you must first check to see if the jumpers on the card itself are set to an I/O of 278 and an IRQ of 5. The default settings from the factory may be different. Once you have set the jumpers to the correct settings, **I/O = 278 and IRQ = 5**, install the card in your PC. If you are not comfortable installing the card have a qualified technician install the hardware. *There are other possible I/O and IRQ settings listed on the last page but they are not recommended.*

After the card is properly seated in an open card slot. You must install the card into Windows95.

Note: Do not use the install program that is supplied in the disk.

The Steps Required to Install Your FarPoint Card into Windows95 are as follows:

1. Go to the **Start Menu**, select **Settings**, then select **Control Panel**.



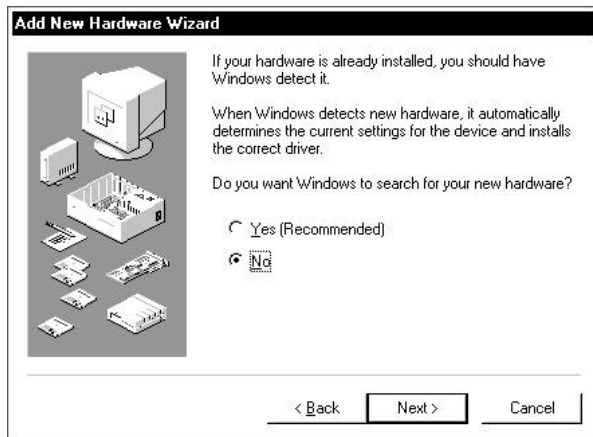
2. In the Control Panel **double click** on the **Add New Hardware** icon.



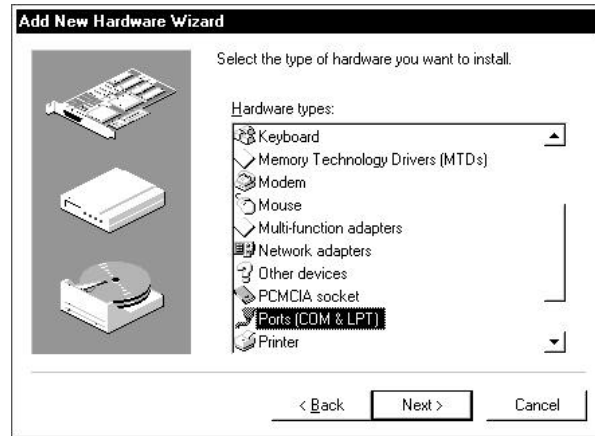
3. This will bring up the Add New Hardware Wizard. Select the **Next** button on this window.



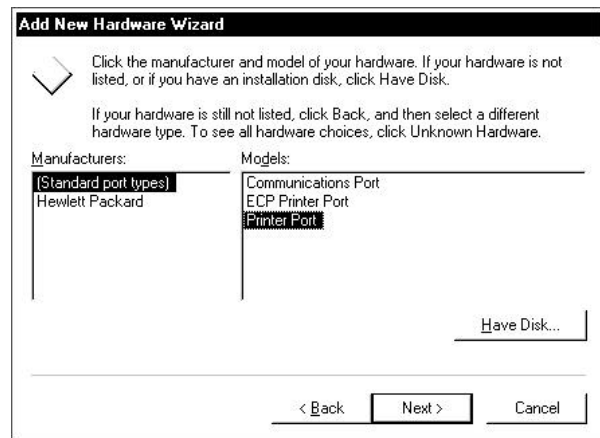
- The next window will ask, “Do you want Windows to search for your new hardware?” select **NO**, then select the **Next** button.



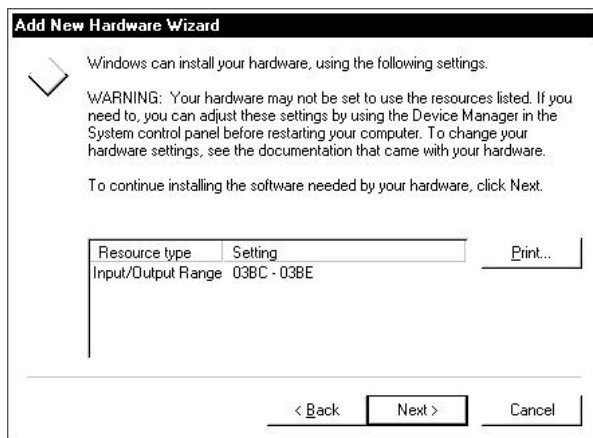
- This window will ask you to “Select the type of hardware you want to install. Select the **Ports (COM & LPT)**, then select the **Next** button.



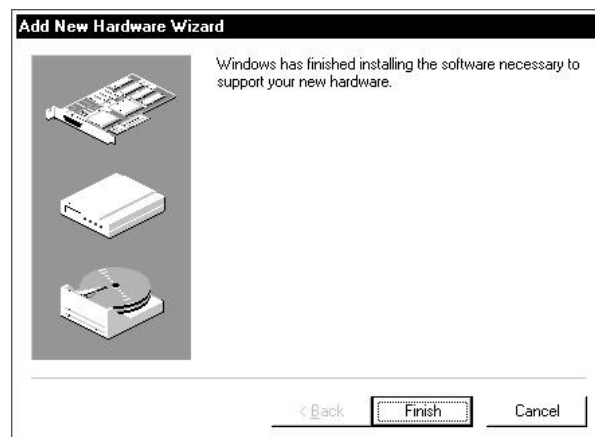
- On the next window select **(Standard port types)** in the “Manufacturers” column and **Printer Port** in the “Models” column, then select the **Next** button.



- The next window will display the Input/Output Range. Select the **Next** button.



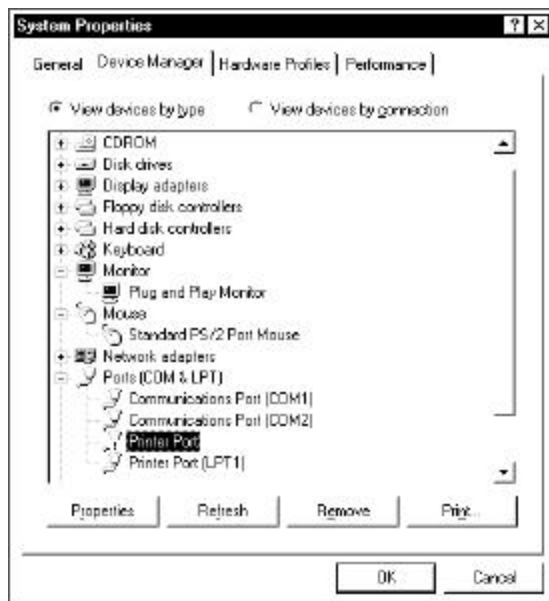
- This brings up the last window that will inform you that “Windows has finished installing the software necessary to support your new hardware”. Select the **Finish** button. Windows will then prompt you to Restart Your Computer, select **NO**.



9. Next double click the System icon in the Control Panel.

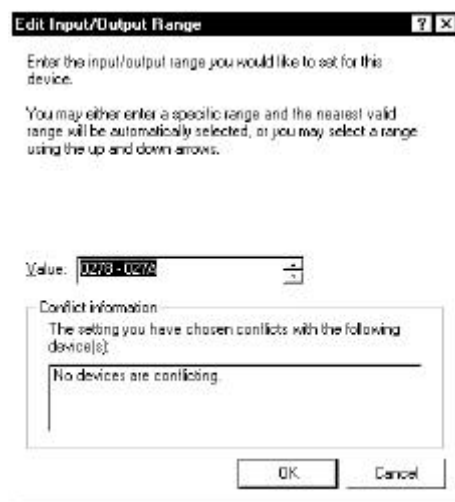
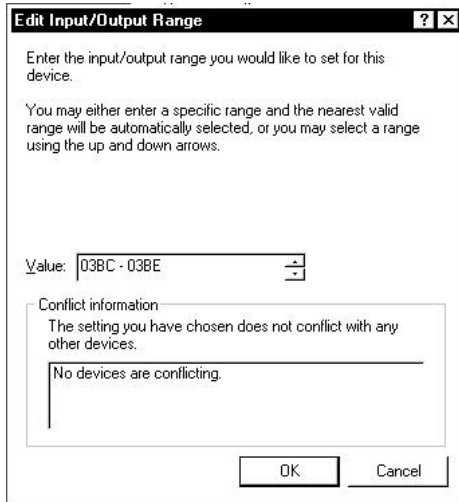
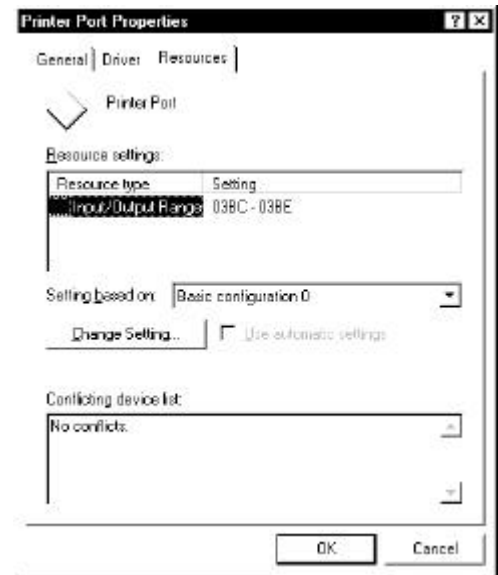


10. This will bring up your System Properties window. There will be an exclamation mark in a yellow circle. This is to inform you that the hardware is not configured properly. **Double click** on the **Printer Port** that has the exclamation mark next to it.



11. This will bring up the Printer Port Properties window. Select the **Resources** tab then double click on the **Input/Output Range**.

12. This will allow you to edit the Input/Output Range. Set the "Value" to **0278-027A** and make sure that "No Devices are conflicting" In the Conflict information box. Then select the **OK** button and then select the **OK** button in the **Printer Port Properties**. This will prompt you to Restart your Computer, **Restart you computer**.



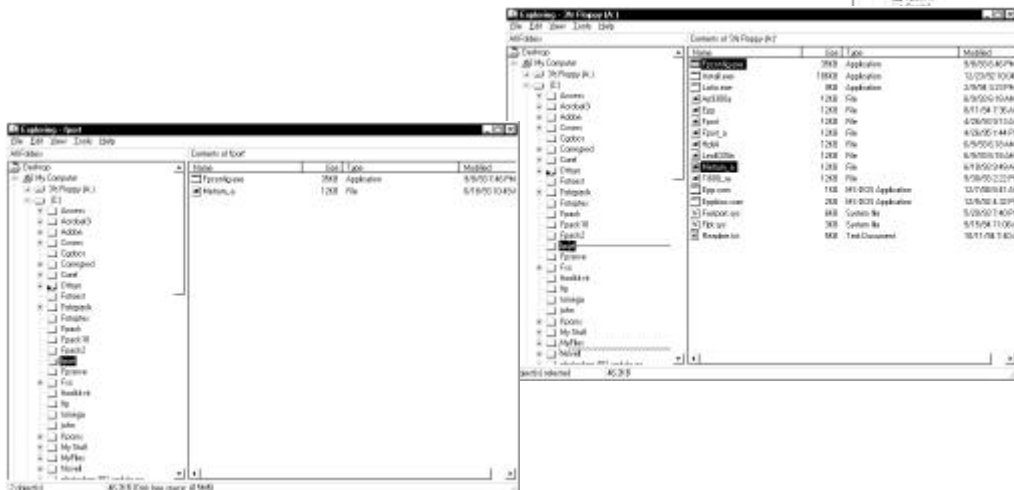
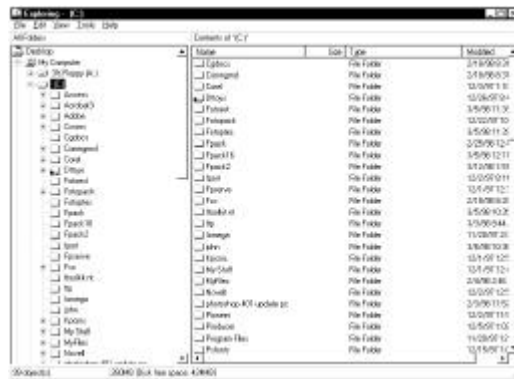
Installing the Software

The next step is to install the software that allows the FarPoint card to run in **WINDOWS 95 only**.

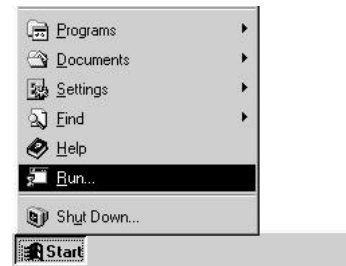
NOTE: If you are installing the Far Point on WINDOWS NT 4.0, follow the instructions provided by Warp Nine.

The steps are as follows to install the software:

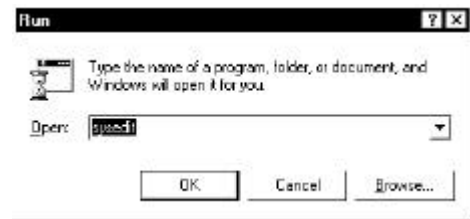
1. **Insert** the disk labeled **FarPoint** or **Warp Nine**, that you received with your card.
2. Open **Windows Explorer**.
3. **Create a New Folder** in the C drive and name it **fport**.
4. **Select the A or Floppy drive** on the **left window** of the **Windows Explorer**. This will display the contents of the **FarPoint** disk in the **right window** of the **Windows Explorer**.
5. Select the files **FPConfig.EXE** and **Metrum_A** by holding the **Control key** (on your keyboard) down and selecting the file.
6. Then **drag the files** from the right window of the **Windows Explorer** to the left window and place them in the **fport** folder in the **C drive**.
7. Then click on the **fport** folder in the C drive on the left window of the **Windows Explorer**. The **contents of the fport** folder should reflect the two files that you copied into it, **FPConfig.EXE** and **Metrum_A**.
8. Next **close the Windows Explorer**.



- Now you must Edit your computers **AutoExec.BAT** file. First select **Start**, Select **Run...**



- This will bring the Run box up. Type **sysedit** in the box and select **OK**.



- This will bring up the System Configuration Editor window. There will be multiple windows displayed here. Your concern is the top window that says **AUTOEXEC.BAT** in the upper left corner of the window. You must **add** (type) the following lines in the AUTOEXEC.BAT file:



```

cd fport
fport -p278 -l2 -dmetrum_a
mode lpt2: retry=p
  
```

Note: The entries -l2 and lpt2: begin with the letter L not the number 1 (one).

- After adding these entries to the AUTOEXEC.BAT file close the System Configuration Editor and save the changes to the file.

- Then shut down Windows and restart your computer.

This completes the installation of your FarPoint Card.

There are other possible choices for the I/O and IRQ settings are as follows:

<u>I/O</u>		<u>IRQ</u>
278	LPT 2	5 Recommended
280	General I/O	10, 11, 12, or 15
290	General I/O	10, 11, 12, or 15
378	LPT 1	7

To avoid card and system conflicts, suggest using the recommended settings (I/O 278, LPT2, IRQ 5).